



Job: _____ Item No. _____

Notes:

Model Number: PUCH-24S PUCH-14S

Heated Smart Order Slimline Cabinets

SPECIFICATIONS



PUCH-24S shown (center)
with two PUCH-14SAO add on units (left and right ends)
and clear doors

DESCRIPTION

Carter-Hoffmann PUC Smart Order Pick-Up cabinets are designed for automated pick-up, carry-out and drop-off, including 3rd party delivery. Available in front-loading and pass-through. Add-on cabinets can be connected to a master cabinet for flexible capacity. Cabinets are connected via Ethernet or Wi-Fi to generate an order QR code. They can operate stand-alone or be integrated with sales and online software for seamless function and data analytics.

SHORT FORM SPECIFICATIONS

Carter-Hoffmann floor standing heated PUC Smart Order Cabinet. Internet enabled order fulfillment with capacitive touchscreen and QR code scanner, two Ethernet jacks; Wi-Fi or Ethernet connection required (customer provided). Software includes order management, customer notification and cleaning cycle notification. Pop-latch, auto-open, manual close doors. Stainless steel construction with anti-microbial powder-coated doors. 14”H x 12”W x 14”D compartments with product sensors and interior lighting. 120 volts, 8.0 - 16A, 60 Hz, single phase, six foot rubber cord with 3 prong grounding plug.

FEATURES

- Capacitive touchscreen tablet with QR code scanner
one tablet on PUCH-24S front-access
two tablets on PUCH-24S-PT pass-through
- Tablet can be located on the right, left or in the center of the cabinet
- 14”H x 12”W x 14”D compartments with product sensors and interior lighting
- Heated lockers: programmable temperature up to 176°F; can be turned off for ambient holding
- Clear pop-latch, auto-open doors; manual close
- Stainless steel construction; doors feature gray anti-microbial powder coating
- Front loading cabinets have stainless steel back
- Add-on cabinets require connection to master cabinet for control interface
- Add-ons can be connected to a master for an additional 52 cubbies (60 total, including master cabinet)
- Software includes order management, programmable alarm for dwell time, customer notification and cleaning cycle notification
- Two Ethernet jacks for network connection and optional add-on cabinets
- Technology required (customer provided): Ethernet or Wi-Fi internet connection

OPTIONS AND ACCESSORIES

- Integration of software to existing POS system
- Custom colors and/or logos for large orders
- See matrix on page 3 for all available configurations

CERTIFICATIONS



WARRANTY

PUC cabinets come with a one year warranty for parts and labor.



CARTER-HOFFMANN

1551 McCormick Ave., Mundelein, IL 60060

847.362.5500 800.323.9793

www.carter-hoffmann.com

Follow Us



Form PUCH-S

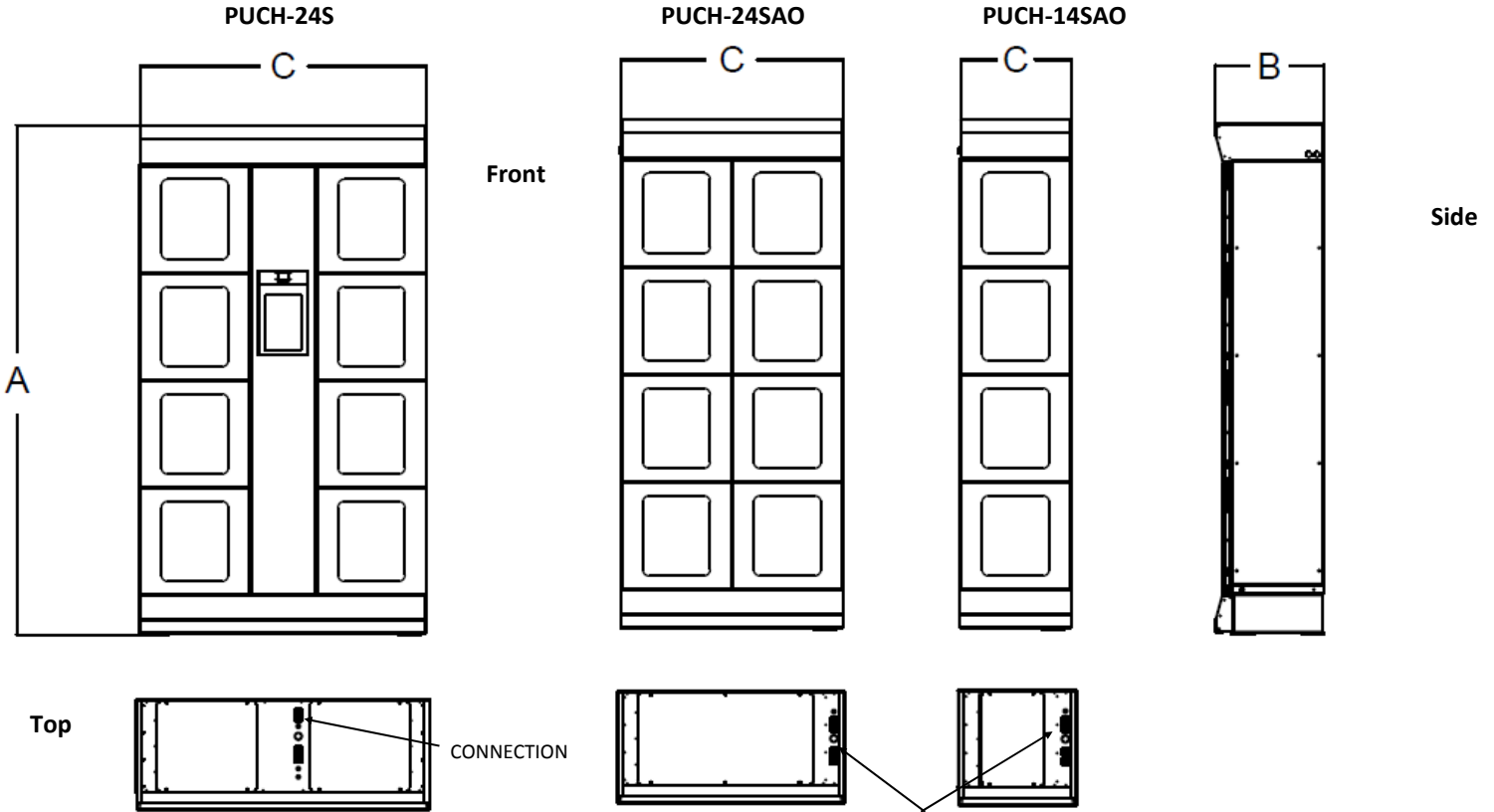




Job: _____ Item No. _____
 Notes: _____
 Model Number: PUCH-24S PUCH-14S

Heated Smart Order Slimline Cabinets

SPECIFICATIONS



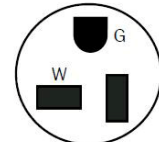
ELECTRICAL DATA

Single electrical connection:

PUCH-14S: 120volts, 8.0A, 60Hz, 1Ph, NEMA 5-15P plug
 PUCH-24S: 120volts, 16.0A, 60Hz, 1Ph, NEMA 5-20P plug



NEMA 5-15P



NEMA 5-20P

Base Model Number	Cabinet Style	Number of Cubbies	Loading Style	Height [A]		Depth [B]		Width [C]		Weight	
				in	mm	in	mm	in	mm	lbs	kg
PUCH-24S	Master	8	Front-Load	78 ¹ / ₂	1994	16 ⁵ / ₈	422	44 ¹ / ₄	1124	310	141
PUCH-24SAO*	Add-on	8	Front-Load	78 ¹ / ₂	1994	16 ⁵ / ₈	422	34 ¹ / ₈	867	310	141
PUCH-14SAO*	Add-on	4	Front-Load	78 ¹ / ₂	1994	16 ⁵ / ₈	422	17 ¹ / ₈	435	310	141

***Add-on cabinets are available only as an option; they are not stand-alone and must be connected to a master cabinet.**

Due to periodic changes in designs, methods, procedures, policies and regulations, the specifications contained in this sheet are subject to change without notice. While Carter-Hoffmann exercises good faith efforts to provide information that is accurate, we are not responsible for errors or omissions in information provided or conclusions reached as a result of using these specifications. By using the information provided, the user assumes all risks in connection with such use.



Job: _____ Item No. _____
 Notes: _____
 Model Number: PUCH-24S PUCH-14S

Heated Smart Order Slimline Cabinets

SPECIFICATIONS

Model Matrix

PUC cabinets are available in a number of configurations. The matrix below defines each configuration.

S = slimline
C = center controls
L = left (left side controls or left side add-on)
R = right (right side controls or right side add-on)

AO = add on
PT = pass thru
I = international voltage (specify country)

Model Number	Cabinet Style	Number of Cubbies	Controls in Center	Controls on Left Side	Controls on Right Side	*Add-On Cabinet	Pass Through	Add-On Location to Master	International Voltage
PUCH-24SC	Master	8	X						
PUCH-24SL	Master	8		X					
PUCH-24SR	Master	8			X				
PUCH-24SC-PT	Master	8	X				X		
PUCH-24SL-PT	Master	8		X			X		
PUCH-24SR-PT	Master	8			X		X		
PUCH-14SAOL	Add-On	4				X		Left	
PUCH-14SAOR	Add-On	4				X		Right	
PUCH-14SAOL-PT	Add-On	4				X	X	Left	
PUCH-14SAOR-PT	Add-On	4				X		Right	
PUCH-24SAOL	Add-On	8				X		Left	
PUCH-24SAOR	Add-On	8				X		Right	
PUCH-24SAOL-PT	Add-On	8				X	X	Left	
PUCH-24SAOR-PT	Add-On	8				X	X	Right	
PUCH-24SC-I	Master	8	X						X
PUCH-24SL-I	Master	8		X					X
PUCH-24SR-I	Master	8			X				X
PUCH-24SC-PTI	Master	8	X				X		X
PUCH-24SL-PTI	Master	8		X			X		X
PUCH-24SR-PTI	Master	8			X		X		X
PUCH-14SAOL-I	Add-On	4				X		Left	X
PUCH-14SAOR-I	Add-On	4				X		Right	X
PUCH-14SAOL-PTI	Add-On	4				X	X	Left	X
PUCH-14SAOR-PTI	Add-On	4				X		Right	X
PUCH-24SAOL-I	Add-On	8				X		Left	X
PUCH-24SAOR-I	Add-On	8				X		Right	X
PUCH-24SAOL-PTI	Add-On	8				X	X	Left	X
PUCH-24SAOR-PTI	Add-On	8				X	X	Right	X

CARTER-HOFFMANN

1551 McCormick Ave., Mundelein, IL 60060
 Phone 800.323.9793 • Fax 847.367.8981
 www.carter-hoffmann.com

Printed in the USA • PUCH-S • Rev. C • 10..2021
 Specifications are subject to change without notice and are not intended for installation purposes.